

WAAS CH <b>45802</b> <b>W24A</b>	APP CRS <b>241°</b>	Rwy ldg <b>3856</b> TDZE <b>546</b> Apt Elev <b>546</b>
--	------------------------	---

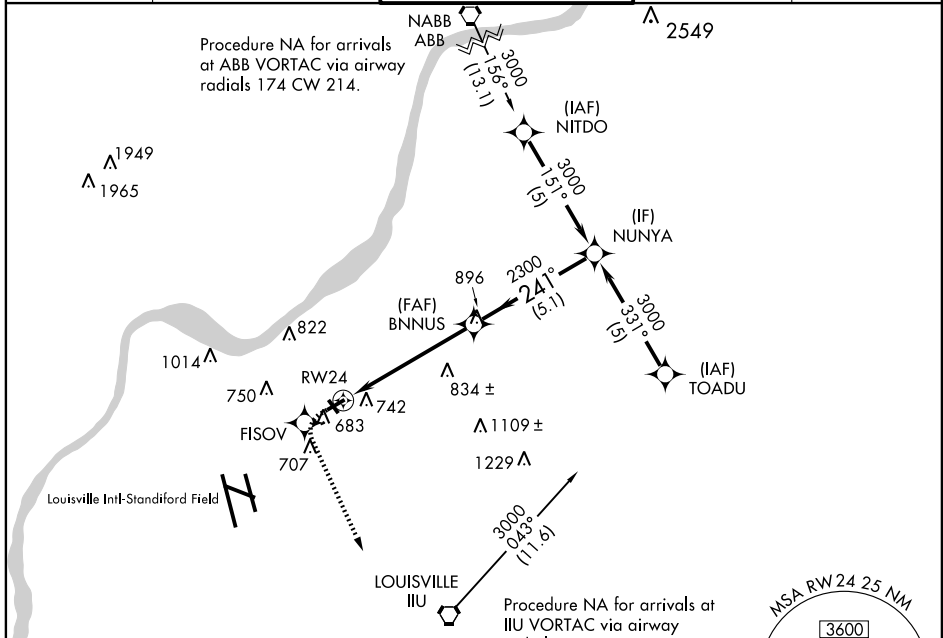
# RNAV (GPS) RWY 24

LOUISVILLE/BOWMAN FIELD (LOU)

**▼** If local altimeter setting not received, use Louisville Intl-Standiford Field altimeter setting. DME/DME RNP-0.3 NA. Visibility reduction by Helicopters NA.

**▲** MISSED APPROACH: Climb to 3200 direct FISOV and via 156° track to MIXKO and hold.

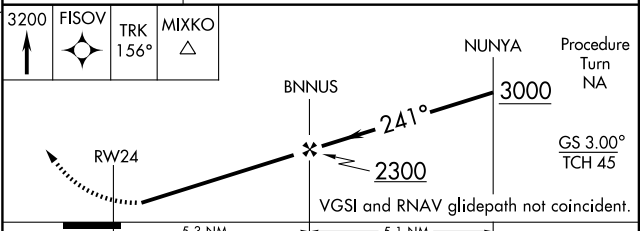
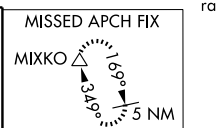
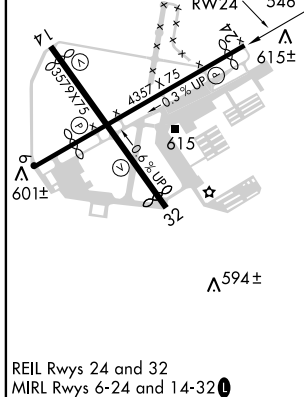
ATIS <b>112.2</b>	LOUISVILLE APP CON <b>132.075 327.0</b>	<b>BOWMAN TOWER ★</b> <b>119.5 (CTAF) 0 257.625</b>	GND CON <b>121.8</b>	CLNC DEL <b>118.9</b>
----------------------	--	--	-------------------------	--------------------------



SE-1, 18 JAN 2007 to 15 FEB 2007

SE-1, 18 JAN 2007 to 15 FEB 2007

ELEV 546	Rwy 6 ldg 3469'
	Rwy 14 ldg 3373'
	Rwy 24 ldg 3856'
	Rwy 32 ldg 3125'



CATEGORY	A	B	C	D
LPV DA	840-1	294 (300-1)		NA
LNAV MDA	1020-1	474 (500-1)		NA
CIRCLING	1060-1	514 (600-1)		NA